



Na⁺ CP type II β Polyclonal Antibody

Catalog No	YP-Ab-16471
Isotype	IgG
Reactivity	Human;Mouse;Rat
Applications	WB;ELISA;IHC
Gene Name	SCN2B
Protein Name	Sodium channel subunit beta-2
Immunogen	The antiserum was produced against synthesized peptide derived from human SCN2B. AA range:71-120
Specificity	Na ⁺ CP type II β Polyclonal Antibody detects endogenous levels of Na ⁺ CP type I β protein.
Formulation	Liquid in PBS containing 50% glycerol, 0.5% BSA and 0.02% sodium azide.
Source	Polyclonal, Rabbit,IgG
Purification	The antibody was affinity-purified from rabbit antiserum by affinity-chromatography using epitope-specific immunogen.
Dilution	WB 1:500-2000;IHC-p 1:50-300; ELISA 2000-20000
Concentration	1 mg/ml
Purity	≥90%
Storage Stability	-20°C/1 year
Synonyms	SCN2B; Sodium channel subunit beta-2
Observed Band	24kD
Cell Pathway	Membrane; Single-pass type I membrane protein.
Tissue Specificity	Brain specific.
Function	function:Crucial in the assembly, expression, and functional modulation of the heterotrimeric complex of the sodium channel. The subunit beta-2 causes an increase in the plasma membrane surface area and in its folding into microvilli. Interacts with TNFR1 may play a crucial role in clustering and regulation of activity of sodium channels at nodes of Ranvier.,similarity:Contains 1 Ig-like C2-type (immunoglobulin-like) domain.,subunit:The sodium channel consists of a pore-forming alpha subunit, beta-1 and beta-2 subunits. Beta-1 is non-covalently associated with alpha, while beta-2 is covalently linked by disulfide bonds. Interaction with SCN10A and TNFR1.,tissue specificity:Brain specific.,
Background	The protein encoded by this gene is the beta 2 subunit of the type II voltage-gated sodium channel. The encoded protein is involved in cell-cell adhesion and cell migration. Defects in this gene can be a cause of Brugada Syndrome, atrial fibrillation, or sudden infant death syndrome. [provided by RefSeq, Jul 2015],



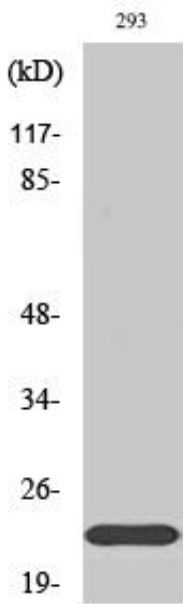
matters needing attention

Avoid repeated freezing and thawing!

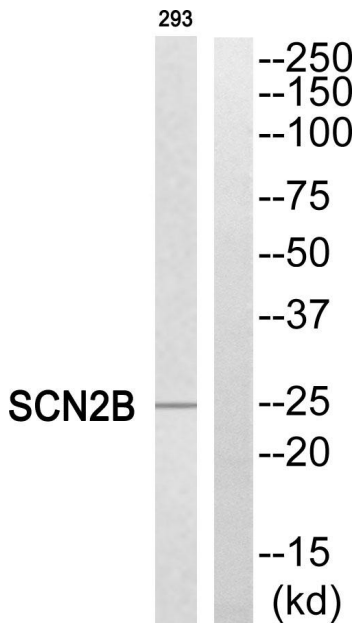
Usage suggestions

This product can be used in immunological reaction related experiments. For more information, please consult technical personnel.

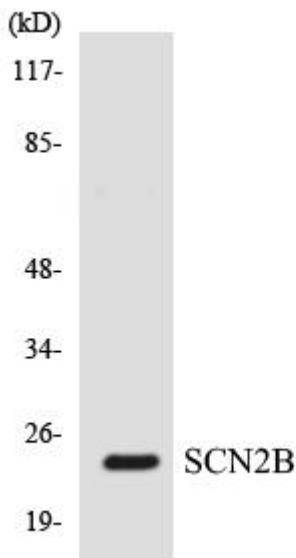
Products Images



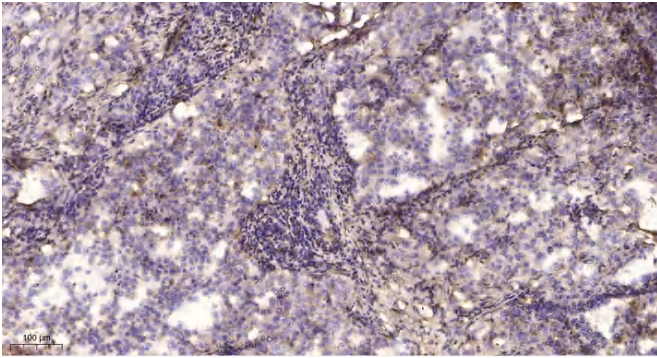
Western Blot analysis of various cells using Na⁺ CP type II β Polyclonal Antibody



Western blot analysis of SCN2B Antibody. The lane on the right is blocked with the SCN2B peptide.



Western blot analysis of the lysates from HepG2 cells using SCN2B antibody.



Immunohistochemical analysis of paraffin-embedded human lung cancer. 1, Antibody was diluted at 1:200(4° overnight). 2, Tris-EDTA,pH9.0 was used for antigen retrieval. 3,Secondary antibody was diluted at 1:200(room temperature, 45min).